



GAT MONTHLY MEMBERSHIP PROGRESS REPORT

Results as of: 4/30/2023

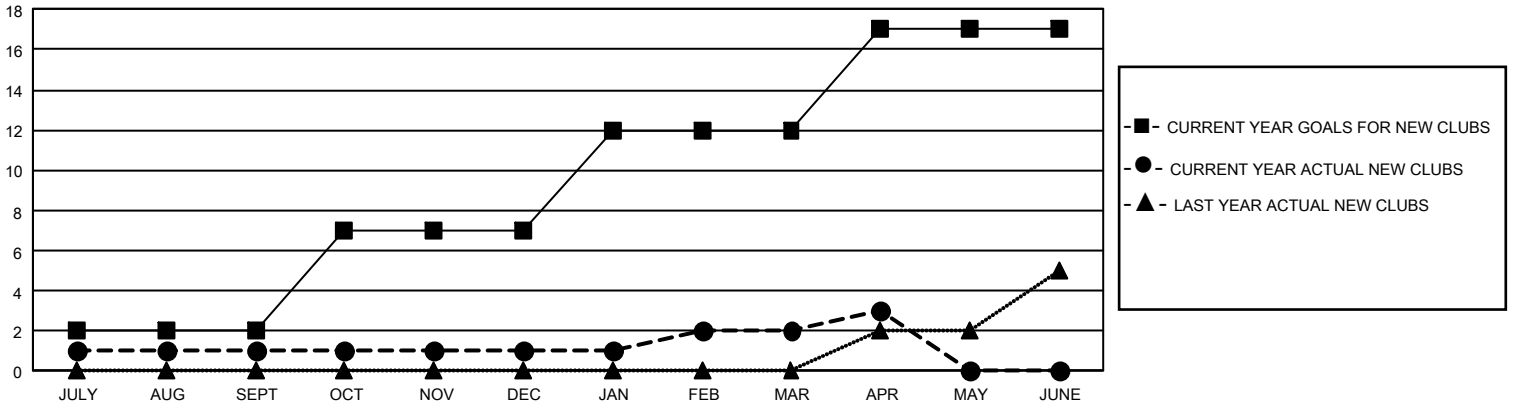
GMT Constitutional Area 3, Group F

REPORT DOES NOT INCLUDE CLUBS IN UNDISTRICTED AREAS.

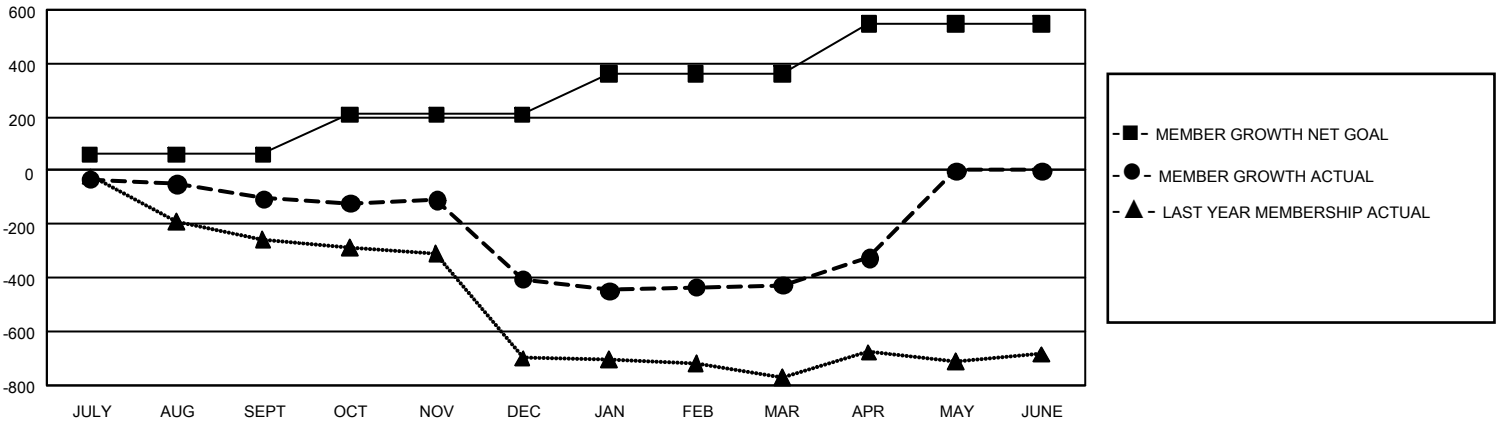
Clubs			
RESULTS FOR 2022-2023			
QUARTER	NEW CLUB GOAL	NEW CLUBS	DROPPED CLUBS
JULY/AUG/SEPT	6	1	3
OCT/NOV/DEC	15	0	13
JAN/FEB/MAR	15	1	1
APR/MAY/JUNE	15	1	1

Members			
RESULTS FOR 2022-2023			
QUARTER	MEMBER GROWTH NET GOAL	MEMBER GROWTH ACTUAL	DROPPED MEMBERS ACTUAL (including transfers)
JULY/AUG/SEPT	60	175	249
OCT/NOV/DEC	150	220	504
JAN/FEB/MAR	150	144	125
APR/MAY/JUNE	188	149	43

GOALS AND ACTUAL NEW CLUBS CUMULATIVE



GOALS AND ACTUAL MEMBERS CUMULATIVE



DROPPED CLUBS: 18	141 CLUBS OF 264 ADDED 1 OR MORE NEW MEMBERS	GENDER DISTRIBUTION	
		MALE 3,076 (46.50%) FEMALE 3,518 (53.18%) NON BINARY 0 (0.00%) PREFER NOT TO ANSWER 21 (0.32%)	
DROPPED MEMBERS		CLICK HERE FOR CUMULATIVE MEMBERSHIP DATA	TOTAL FAMILY UNIT MEMBERS 2,920
DECEASED 37 CLUB CANCELLED 185 OTHER 699 TOTAL 921			FAMILY MEMBERS PAYING HALF DUES 1,567